

Okoye

A NEW QUIRKHORSE
SANS IN 9 WEIGHTS



(Okoye...?)

Okoye
Okoye
Okoye
Okoye
Okoye
Okoye
Okoye
Okoye!

Okoye sits in a space between the bonkers curviness of 19th century grotesques, and the sandblasted neutrality of 20th century models.

Both extremes are nice, but there's something to be said for neutrality with some character still in place, yeah?

Yeah!

Thin ExtraLight Light Regular Medium
SemiBold Bold ExtraBold Black

ABCDEFGHIJKLMNOPQRSTUVWXYZ
abcdefghijklmnopqrstuvwxyz ı!/?&@\$£*
ABCDEFGHIJKLMNOPQRSTUVWXYZ † ‡ ➤ ✕ † ✕

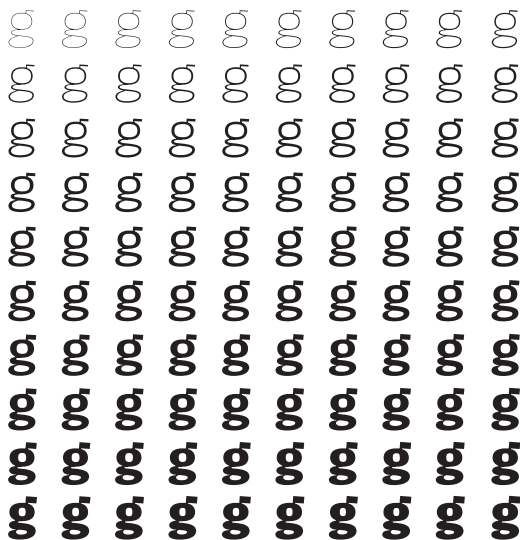
TRUE SMALL CAPS
IN ALL WEIGHTS.

OKOYE can be
UNiCASE

(IF YOU'RE **THAT KIND OF** PERSON.)

ALTERNATE SHAPES IF YOU WANNA GET WEIRD:


strange
DRINKS



*FUN FACT: VARIABLE FONTS CAN HAVE SLIDERS FOR LOTS OF COOL THINGS: WEIGHT, SLANT, OPTICAL SIZE, WEIGHT, I KEPT IT SIMPLE.

Choose your own weight. Okoye ships with a variable font, which is a new(ish) font format. All the font's weights are included in a single file. Variable fonts install just like all the rest of your typefaces.

If you need to fine-tune Okoye's weight for precision typesetting or identity design, you can do that.

In Adobe apps, a little  button appears in the type palette when you select a variable font. Click it; you'll see a slider that let you choose the exact weight* you need, regardless of the nine I picked.

CROSSEXAMINING

THIN

DADDYLONGLEGS

EXTRALIGHT

SINGULARISATION

LIGHT

DECONSTRUCTED

REGULAR

RESPONSIBILITIES

MEDIUM

PRESTIDIGITATION

SEMIBOLD

UNQUESTIONABLY

BOLD

ENCAPSULATIONS

EXTRABOLD

PREDISPOSITIONS

BLACK

Incomprehensibility

THIN

Counterintelligence

EXTRALIGHT

Narrowmindedness

LIGHT

Circumnavigational

REGULAR

Inconspicuousness

MEDIUM

Underdevelopment

SEMIBOLD

Chemiluminescent

BOLD

Overcommitments

EXTRABOLD

Phenomenological

BLACK

CONTEMPORANEOUSLY

THIN

COMPARTMENTALISING

EXTRALIGHT

HYPERSENSITIVENESS

LIGHT

UNCOMFORTABLENESS

REGULAR

COUNTERPRODUCTIVE

MEDIUM

IMMUNOSUPPRESSIVE

SEMIBOLD

UNCOMPREHENDINGLY

BOLD

COMPARTMENTALISED

EXTRABOLD

SPECTROPHOTOMETRY

BLACK

I spent a lot of time looking at the uppercase going, “would Jenny Holzer be able to shout with this typeface?” Does Okoye lend character, then get out of the way?

Yes, absolutely. Herewith:



**HYPE IS JUST
WEAPONIZED
OPTIMISM**

ag

THIN

ag

EXTRALIGHT

ag

LIGHT

ag

REGULAR

ag

MEDIUM

ag

SEMIBOLD

ag

BOLD

ag

EXTRABOLD

ag

BLACK

Okoye changes tone across weights.

Okoye's weights are interesting: Thin to Light are almost totally monolinear. Regular to Black: progressively contrastier.

Default spacing got a healthy consideration in the design process as well: Thin to Light are spaced broadly. Regular begins closing spaces between letters; Black is very tight, for brash headlines.

Bowls swoop into stems on b, d, p and q, to feel handwritten. In contrast, I designed a jutting promontory to be g's ear and Q's tail; little angular jetties sticking out into a sea of roundness.

Angularity also shows up in alts for K, R, g, and k. Their lower strokes and legs jut with the same enthusiasm as g and Q.

In all weights, there is motion: open rounds like C, G, S, c, e and s have a slight overhang on top and a squared lower half—a lean to the right. That is to say: **Okoye is a little bucktoothed.**

on on on

THIN (100)

EXTRALIGHT (200)

LIGHT (300)

on on on

REGULAR (400)

MEDIUM (500)

SEMIBOLD (600)

on on on

BOLD (700)

EXTRABOLD (800)

BLACK (900)

If you're using Okoye for interfaces, each weight lines up at 100–900 in the CSS specification you already know: Thin is 100, Regular is 400, Bold is 700, Black is 900.

There's extensive Latin language support, a set of small caps which mirrors full-size caps exactly (nice for labels on controls), and arrows to point out important things in text or interface.

Okoye will be your quirkhorse: hardworking, with personality.

RK

ec

dog!

NO

A B C D E F G H I J K L M
N O P Q R S T U V W X Y Z

a b c d e f g h i j k l m
n o p q r s t u v w x y z
0 1 2 3 4 5 6 7 8 9

A B C D E F G H I J K L M
N O P Q R S T U V W X Y Z

0 1 2 3 4 5 6 7 8 9
\$ € £ ¥ % & ! ? @

ABCDEFGHIJKLM
NOPQRSTUVWXYZ

abcdefghijklm
nopqrstuvwxyz

0123456789

ABCDEFGHIJKLM
NOPQRSTUVWXYZ

0123456789

\$€£¥%&!/?@

ABCDEFGHIJKLM
NOPQRSTUVWXYZ

abcdefghijklm
nopqrstuvwxyz
0123456789

ABCDEFGHIJKLM
NOPQRSTUVWXYZ

0123456789
\$€£¥%&!/?@

ABCDEFGHIJKLM
NOPQRSTUVWXYZ

abcdefghijklm
nopqrstuvwxyz
0123456789

ABCDEFGHIJKLM
NOPQRSTUVWXYZ

0123456789
\$€£¥%&!/?@

ABCDEFGHIJKLM
NOPQRSTUVWXYZ

abcdefghijklm
nopqrstuvwxyz

0123456789
ABCDEFGHIJKLM
NOPQRSTUVWXYZ

0123456789
\$€£¥%&!/?@

**ABCDEFGHIJKLM
NOPQRSTUVWXYZ**

**abcdefghijklm
nopqrstuvwxyz**

0123456789

**ABCDEFGHIJKLM
NOPQRSTUVWXYZ**

0123456789

\$€£¥%&!?!@

**ABCDEFGHIJKLM
NOPQRSTUVWXYZ**

**abcdefghijklm
nopqrstuvwxyz
0123456789**

**ABCDEFGHIJKLM
NOPQRSTUVWXYZ
0123456789**

\$€£¥%&!?!@

**ABCDEFGHIJKLM
NOPQRSTUVWXYZ**

**abcdefghijklm
nopqrstuvwxyz
0123456789**

**ABCDEFGHIJKLM
NOPQRSTUVWXYZ
0123456789**

\$€£¥%&!?!@

**ABCDEFGHIJKLM
NOPQRSTUVWXYZ**

**abcdefghijklm
nopqrstuvwxyz
0123456789**

**ABCDEFGHIJKLM
NOPQRSTUVWXYZ
0123456789**

\$€£¥%&!?!@

Okoye Features

RKrkġ RKrkġ

STYLISTIC ALTERNATES (TURN ON SS01 IN OPENTYPE FEATURES)

AVENUE123

SMALL CAPS & MATCHING NUMERALS

a@b ¿que? A@B ¿QUE?

CASED FORMS (FOR CLEAN UPPERCASE LINES & SHOUTING IN SPANISH JAJAJA)

12345 / 12345 12/5/47

FRACTIONS (BUT UNDERSTANDS WHEN YOU'RE WRITING DATES)

36⁴ H₂O

SUPERSCRIPIT & SUBSCRIPT

↑ ↗ → ↘ ↓ ↙ ← ↖ ⇅ ⇆

ARROWS

1. **Chlorophyll *a* and *b* content**

UPPERCASE

*/ \ / \ / \ / \ / \ / \ / \ / \ / \ / \ / \ / \ / \ / *

U U U U U U U L L L L L L L L L L L

[illegible]

1. m n s t r k l p q u v x y z

[illegible]

000092828

[illegible]

٠ ١ ٢ ٣ ٤ ٥ ٦ ٧ ٨ ٩

| | | | ! | | | < < < < <

LIGATURES

1. **Chlorophyll *a*** (mg/g)

LOWERCASE

^

LIGATURES

Okoye's glyph set (shown in Okoye Regular)

SMALL CAPS

NUMERALS

LIGATURES

Okoye's glyph set (shown in Okoye Regular)

0123456789

NUMERALS

0123456789 0123456789 $\frac{1}{2}$ $\frac{1}{4}$ $\frac{3}{4}$ $\frac{1}{8}$ $\frac{3}{8}$ $\frac{5}{8}$ $\frac{7}{8}$

DENOMINATORS & NUMERATORS

0123456789

0123456789

SUBSCRIPT & SUPERSCRIPT

.,,:...:·#|!¿?--—_/\(){}[]*+≠

PUNCTUATION

,,”“”‘»»»»”’@&¶

(){}[]i¿@«»»»———

ALL-CAPS PUNCTUATION

§©®™°||\$€£¥+-=≠<>≤≥

SYMBOLS

±~^°%‰◇

↑↗→↘↓↙←↘↔↕

ARROWS

**THANKS FOR LOOKING
AND REMEMBER:**

**IS IT HOT?
DOES IT LOOK GOOD?
ARE YOU PROUD
TO SERVE IT?**

**ATTITUDE
REFLECTS
LEADERSHIP!**

YEET
BY EXAMPLE





XO TYPE.CO